

Zepcam T2+ Bodycam

Technical specifications

Specifications

Main

| | |
|---------------------|---|
| Functionalities | Recording of video, audio, photo, GPS |
| Video resolution | 1920x1080 - 30 FPS, 1280x720 - 30 FPS, 840x480 - 30 FPS |
| Video format | MP4, H.264 |
| Pre event recording | Up to 60s for all resolutions |
| Location | GPS during recording, in-device GPS capture Not dependent on smartphone GPS connection |
| Scene tagging | Yes, including photo shot |
| Audio | AAC(LC) 128kb/s, mono, 48khz |
| Storage | 64GB |

Video & optics

| | |
|--------------------------|---|
| Sensor video | 4 MP CMOS |
| Lens | 140 degrees wide angle lens, low distortion |
| Night vision | Low light image sensor |
| Light sensitivity w/o IR | 0.5 lux |
| Infra Red lights | Auto IR mode for dark environments |

Notifications

| | |
|--------------|---|
| Visual | LED for indication of standby, recording, charging LED's have auto dim, less bright in low light conditions |
| Audio | Audio notification for start / stop recording, disc full and low battery level |
| Stealth mode | Disable audio signals and LED indications for stealth operations Selectable setting Built-in vibration notification functionality |

Battery

| | |
|----------------|---|
| Type | Built-in 3200 mAh Lithium-Ion battery |
| Charging time | 3.5 hours from empty to 80% (fast charge) |
| Recording time | 10h30 hours (1920x1080 - 30 FPS), 11h15 hours (1280x720 - 30 FPS) |
| Standby time | 10h40 hours (1920x1080 - 30 FPS), 11h45 hours (1280x720 - 30 FPS) |
| Charging | Zepcam Docking Station, Single dock with USB charger |

Other

| | |
|----------------------------|---|
| IP Class | IP 65 (rain & dust proof) |
| Certification | CE: EMC-directive 2014/30/EU; 2014/53/EU; performed under Dutch Accreditation council |
| Weight | 115 gram (without mount) |
| Dimensions | 72x56x24mm (HxWxD) |
| Wi-Fi | Disabled feature |
| Security | AES 256 bit encryption |
| Data offload | Via Zepcam Docking Station |
| User management | Use Zepcam Manager to manage users, user rights, connect user ID to Camera ID etc. |
| Video management | Zepcam Manager or an integrated 3rd party video management system |
| Firmware & settings update | Via Zepcam Manager |
| Mounts | Clip mount, 360 degrees rotatable, Peter Jones mount support Option for tripod mount 1/4"-20 |

Available Software

| | |
|----------------|--|
| Zepcam Manager | Web-based software for management of recordings, devices, users and system |
|----------------|--|

Integration

| | |
|---------------|--|
| Functionality | 3rd party integration possible with Video Management Systems, e.g. Milestone |
|---------------|--|

Zepcam T2+ Bodycam

Technical specifications

In the box:

- T2+ Bodycam
- Single dock for charging
- USB wallplug charger
- USB Cable
- Clip Mount
- Quick start manual

- ① Charging indicator
- ② Record indicator
- ③ Light sensor
- ④ Infrared light
- ⑤ Wide angle lens (140 degrees)
- ⑥ Microphone
- ⑦ Power/Recording button
- ⑧ Dock connector
- ⑨ Reset button



INTEGRATED SOLUTION: EASY, SECURE AND SCALABLE



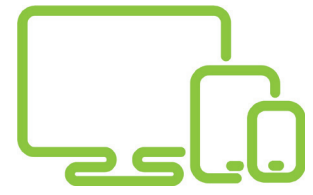
Capture video
Compact, robust and easy to use bodycams



Dock and upload
Docking station for data exchange and fast recharge



Secure storage
Store and manage on the Zepcam cloud or own server



View and manage
Zepcam software or 3rd party video management systems